



Resource Management Services

Citrix Resource Management Services is an application and systems management product designed specifically for the Citrix and Microsoft® multi-user Windows® environments. The product provides full feature management tools for analyzing and tuning MetaFrame™, WinFrame®, Microsoft Windows 2000 Servers, and Microsoft Windows NT Server 4.0, Terminal Server Edition systems.

Citrix Resource Management Services provides audit trail, system monitoring, and billing reports for Citrix MetaFrame, WinFrame, and Microsoft Terminal Server platforms.

A "must" for every server.

Citrix Resource Management Services provides extensive audit trail, comprehensive system monitoring, and the ability to construct detailed billing reports for MetaFrame, WinFrame, and Terminal Server systems.

From organizations with a single

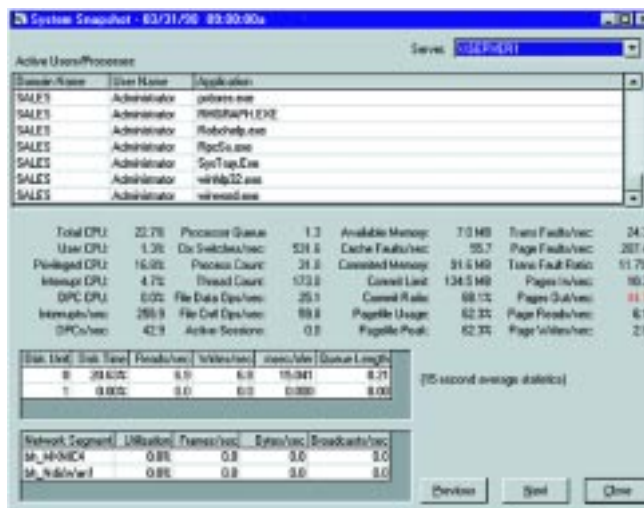
Citrix server to enterprises with a large-scale deployment, Resource Management Services provides the tools necessary to effectively monitor and manage your Citrix server environment.

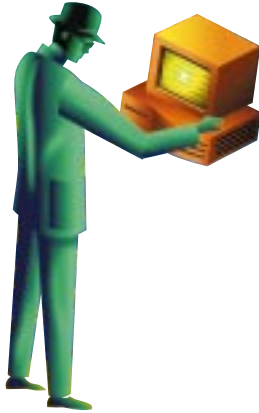
Extensive audit trail.

Resource Management Services works with most ODBC-compliant databases to capture user connections and disconnections, track connection durations, and record what applications are used during user sessions. Application resource requirements can be recorded to assist administrators with capacity planning and graphs may be created to display system usage.

Comprehensive system monitoring.

Resource Management Services lets your help desk know about potential system problems before users start calling. Over 30 real-time performance counters are analyzed and displayed with green, yellow, or red status indicators. From one console, an administrator may view the health of multiple MetaFrame, WinFrame, and Terminal Server systems. Administrators may set custom





thresholds for each performance counter. In the event a threshold is reached, Resource Management Services can send an alert via a pager or an e-mail message. Expert advice is just a click away, presenting an administrator with tips for eliminating performance bottlenecks.

Construct billing reports.

Many organizations provide periodic billing for departmental use of computer systems. With Resource Management Services, fees may be set per minute of connection time,

Seamless operation.

Resource Management Services' data collection service runs in the background of each Citrix server being monitored. Graphical analysis tools make this product easy to learn and use. Best of all, there is no additional user training required since the analysis tools are only seen by administrators.

Citrix Resource Management Services is a must for every Citrix MetaFrame, WinFrame, and Microsoft Terminal Server system. Resource Management

Citrix Resource Management Services is an application and systems management product designed specifically for the Citrix and Microsoft multi-user NT environments.

memory utilization, and/or processor utilization. Users may be assigned to cost centers. Billing reports may be constructed to show resources used, session start time, session elapsed time, and applications executed.

Services is available from authorized members of the Citrix Solutions Network worldwide. For more information on this and other Citrix products, please connect to the Citrix website at www.citrix.com/products.

Worldwide Headquarters
Citrix Systems, Inc.
6400 NW 6th Way
Fort Lauderdale, FL 33309 USA
Tel: +1 (800) 393 1888
Tel: +1 (954) 267 3000
<http://www.citrix.com>

Americas Headquarters
Citrix Systems, Inc.
6400 NW 6th Way
Fort Lauderdale, FL 33309 USA
Tel: +1 (800) 437 7503

European Headquarters
Citrix Systems International GmbH
Rheinweg 9
8200 Schaffhausen
Switzerland
Tel: +41 (52) 635 7700

Asia Pacific Headquarters
Citrix Systems Asia Pacific Pty Ltd.
Level 3, 1 Julius Avenue
Riverside Corporate Park
North Ryde NSW 2113
Sydney, Australia
Tel: +61 (0)2 8870 0800



Copyright © 2000 Citrix Systems, Inc. All rights reserved. Citrix, WinFrame and ICA are registered trademarks, and MetaFrame is a trademark of Citrix Systems, Inc. All other products and services are trademarks or service marks of their respective companies. Features subject to change without notice.

7018E/R1/0100/20000